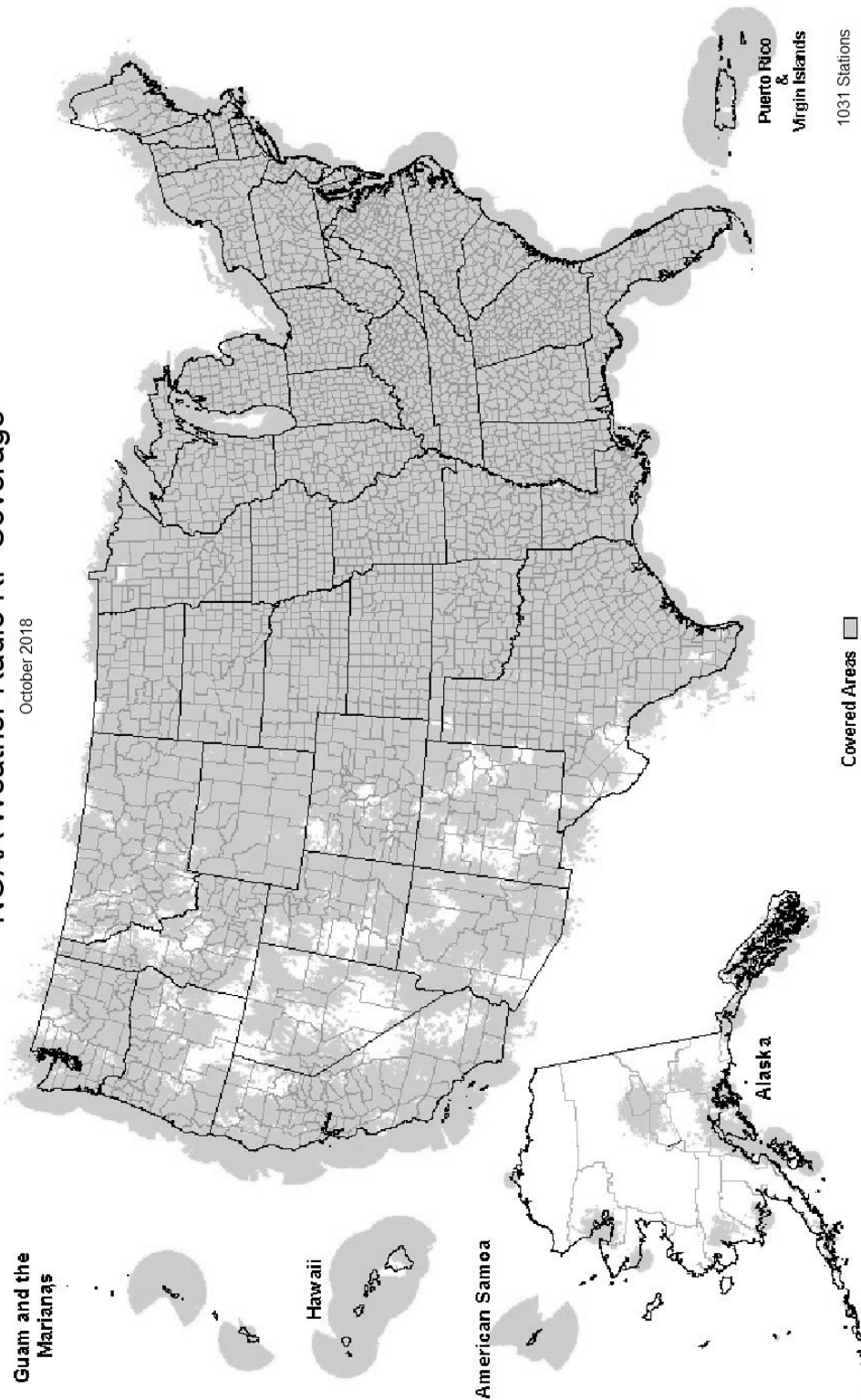
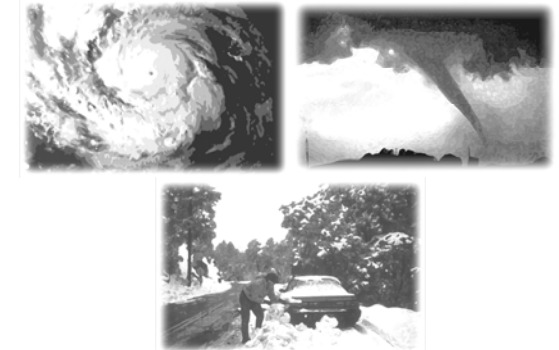
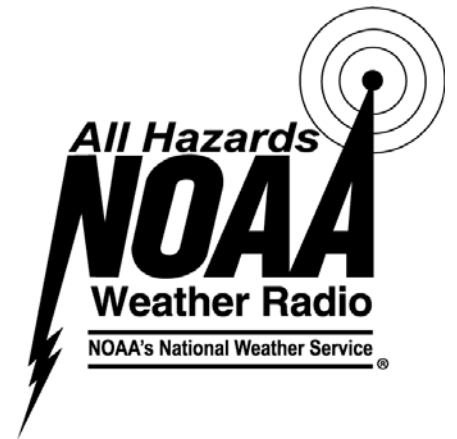


# NOAA Weather Radio RF Coverage

October 2018



NOAA/PA 94062  
Rev October 2018



## The Voice of NOAA's National Weather Service

< Over 1000 Transmitters >

Broadcasting Continuous  
Weather Information on the  
Following Frequencies:

- 162.400 MHz
- 162.425 MHz
- 162.450 MHz
- 162.475 MHz
- 162.500 MHz
- 162.525 MHz
- 162.550 MHz

U.S. Department of Commerce  
National Oceanic and Atmospheric Administration  
National Weather Service

<http://www.weather.gov/nwr/>

# NOAA WEATHER RADIO

The Voice of NOAA's National Weather Service

<http://www.weather.gov/nwr>

NOAA Weather Radio is a service of the National Oceanic and Atmospheric Administration (NOAA) of the U.S. Department of Commerce. As the "voice of the National Weather Service," it provides continuous broadcasts (24 hours a day) of the latest weather information from local National Weather Service offices. Weather messages are repeated every 4 to 6 minutes and are routinely updated every 1 to 6 hours or more frequently in rapidly changing local weather or if a nearby natural hazardous or manmade condition exists.



The regular broadcasts are specifically tailored to weather information needs of the people within the service area of the transmitter. For example, in addition to general weather information, stations in coastal areas provide information of interest to mariners. Other specialized information, such as hydrological forecasts and other climate data may be broadcast.

During severe weather, National Weather Service

forecasters can interrupt the routine weather broadcasts and insert special warning messages concerning imminent threats to life and property. The forecaster can also add special signals to warnings that trigger "alerting" features of specially equipped receivers. In the simplest case, this signal activates audible or visual alarms, indicating that an emergency condition exists within the broadcast areas of the station being monitored, and alerts the listener to turn up the volume and stay tuned for more information. More sophisticated receivers are automatically turned on and set to an audible volume when an alert is received.

In the most sophisticated alerting system, NOAA Weather Radio Specific Area Message Encoding (SAME), digital coding is employed to activate only those special receivers programmed for specific emergency conditions in specific area, typically a county. SAME can activate specially equipped radio and cable television receivers and provide a short text message that identifies the location and type of emergency. SAME is the primary activator for the FCC Emergency Alert System (EAS).

To program NWR SAME receivers with the proper county(s) and marine area(s) of choice, you need to know the 6-digit SAME code number(s) for that county(s). Once you have your code number(s), follow the manufacturer's directions for programming your NWR SAME receiver. You can obtain your SAME code numbers by dialing:

**888-NWR-SAME (888-697-7263)** – Voice & TTY/TTD Accessible

Under a January 1975 White House policy statement, NOAA Weather Radio was designated the sole Government-operated radio system to provide direct warning into private homes for both

<p><b>PUERTO RICO</b>            Maricao .....162.550            San Juan .....162.400</p> <p><b>RHODE ISLAND</b>            Providence .....162.400</p> <p><b>SOUTH CAROLINA</b>            Aiken .....162.450            Aynor .....162.400            Barnwell .....162.500            Beaufort .....162.450            Charleston .....162.550            Cheraw .....162.450            Columbia .....162.400            Cross .....162.475            Florence .....162.550            Georgetown .....162.500            Greenville .....162.550            Jasper County .....162.400            Kirksey .....162.425            Orangeburg .....162.525            Rock Hill .....162.425            Sumter .....162.425</p> <p><b>SOUTH DAKOTA</b>            Aberdeen .....162.475            Arlington .....162.525            Faith .....162.475            Firesteel .....162.425            Hot Springs .....162.425            Lead .....162.525            Lowry .....162.500            Mitchell .....162.450            Philip .....162.450            Pickstown .....162.425            Pierre .....162.400            Porcupine .....162.500            Rapid City .....162.550            Reliance .....162.525            Sioux Falls .....162.400            South Shore .....162.425            Wessington .....162.550            White River .....162.550</p> <p><b>TENNESSEE</b>            Bristol .....162.550            Centerville .....162.450            Chattanooga .....162.550            Clarksville .....162.500            Clifton .....162.500            Cookeville .....162.400            Dyersburg .....162.500            Hickman .....162.500            Jackson .....162.550            Knoxville .....162.475            La Follette .....162.450            Lafayette .....162.525            Lawrenceburg .....162.425            Lobelville .....162.525            Memphis .....162.475            Nashville .....162.550            Shelbyville .....162.475            Spencer .....162.450            Vale .....162.450            Waverly .....162.400            Winchester .....162.525</p> <p><b>TEXAS</b>            Abilene .....162.400            Alpine .....162.550            Amarillo .....162.550</p>	<p>Austin .....162.400            Bay City .....162.425            Beaumont .....162.475            Big Spring .....162.475            Borger .....162.400            Brownsville .....162.550            Bryan .....162.550            Burkeville .....162.425            Carrizo Springs .....162.550            Center .....162.525            Childress .....162.525            Cisco .....162.500            Coleman .....162.475            Corpus Christi .....162.550            Corsicana .....162.525            Cumber .....162.500            Dallas .....162.400            Del Rio .....162.400            D'Hanis .....162.525            Dickens .....162.500            Dilley .....162.500            El Paso .....162.475            El Paso Spanish .....162.550            Fort Worth .....162.550            Galveston .....162.550            Gilmer .....162.425            Gonzales .....162.525            Guadalupe Mt Nat'l. Park .....162.525            Junction .....162.475            Kerrville .....162.450            La Grange .....162.500            Laredo .....162.550            Llano .....162.425            Lubbock .....162.400            Lufkin .....162.550            Marietta .....162.525            Miami .....162.450            Midland/Odessa .....162.400            Milano .....162.525            Mineral Wells .....162.525            Muenster .....162.425            New Taiton .....162.450            Onalaska .....162.500            Ozona .....162.500            Palestine .....162.450            Paris .....162.550            Pecos .....162.450            Perryton .....162.475            Pharr .....162.400            Pharr Spanish .....162.475            Plainview .....162.450            Port O'Connor .....162.475            Richland Springs .....162.525            Richmond .....162.475            Rio Grande City .....162.425            Riviera .....162.525            San Angelo .....162.550            San Antonio .....162.550            Seguin .....162.475            Seminole .....162.425            Sherman .....162.475            Stephenville .....162.450            Summerfield .....162.500            Sweetwater .....162.425            Texarkana .....162.550            Three Rivers .....162.450            Throckmorton .....162.425            Tomball .....162.400            Tyler .....162.475            Uvalde .....162.425            Victoria .....162.400            Waco .....162.475            Wichita Falls .....162.475</p> <p><b>UTAH</b>            Bear Lake .....162.500            Castle Dale .....162.500            Coalville/ Park City .....162.475            Escalante .....162.425            Lake Powell .....162.550            Logan .....162.400            Manti .....162.425            Milford/Cedar City .....162.400            Moab .....162.475            Monticello .....162.450            Salt Lake City .....162.550            St. George .....162.475            Tabiona .....162.550            Tooele (South Mountain) .....162.450            Tooele (Vernon Hills) .....162.525            Vernal .....162.400            Wendover .....162.475</p> <p><b>VERMONT</b>            Burlington .....162.400            Castleton .....162.500            St. Johnsbury .....162.425            Windsor .....162.475</p> <p><b>VIRGIN ISLANDS</b>            St. Croix .....162.500</p> <p><b>VIRGINIA</b>            Accomack .....162.525            Coveseville .....162.450            Fredericksburg .....162.425            Heathsville .....162.400            Lynchburg .....162.550            Manassas .....162.550            Norfolk .....162.550            Richlands .....162.425            Richmond .....162.475            Roanoke .....162.475            Sand Mtn .....162.450            South Boston .....162.525</p> <p><b>WASHINGTON</b>            Astoria .....162.400            Capitol Peak .....162.475            Cle Elum .....162.400            Davis Peak .....162.525            Dayton .....162.525            Forks .....162.425            H Street - Blaine Area .....162.525            Neah Bay .....162.550            Okanogan .....162.525            Plymouth .....162.425            Puget Sound Marine .....162.425            Randle .....162.425            Richland .....162.450            Seattle .....162.550            Spokane .....162.400            Wenatchee .....162.475            Yakima .....162.550</p> <p><b>WEST VIRGINIA</b>            Backbone Mountain .....162.450</p> <p><b>BECKLEY</b> .....162.550  <b>CHARLESTON</b> .....162.400  <b>CLARKSBURG</b> .....162.550  <b>GARFIELD</b> .....162.500  <b>GILBERT</b> .....162.475  <b>GREGGS KNOB</b> .....162.500  <b>HINTON</b> .....162.425  <b>MONTEVILLE</b> .....162.525  <b>MOOREFIELD</b> .....162.400  <b>MORGANTOWN</b> .....162.475  <b>SUTTON</b> .....162.450</p> <p><b>WISCONSIN</b>            Ashland .....162.525            Baraboo .....162.450            Black River Falls .....162.500            Coloma .....162.400            Crandon .....162.450            Dubuque .....162.400            Fond Du Lac .....162.500            Green Bay .....162.550            Gresham .....162.500            Janesville .....162.425            Ladysmith .....162.550            Madison .....162.550            Menomonie .....162.400            Milwaukee .....162.400            New London .....162.525            Park Falls .....162.500            Prairie Du Chien .....162.500            Racine .....162.450            Rhinelander .....162.400            Richland Center .....162.475            Sheboygan .....162.525            Sister Bay .....162.425            Spooner .....162.475            Tomah .....162.525            Wausau .....162.475            Wausaukee .....162.400            Winona .....162.425            Withee .....162.425</p> <p><b>WYOMING</b>            Afton .....162.475            Casper .....162.400            Cheyenne .....162.550            Cody .....162.400            Dubois .....162.450            Elk Plaza .....162.425            Evanston .....162.450            Gillette .....162.500            Glendo .....162.450            Grant Village .....162.450            Jackson .....162.525            Kaycee .....162.550            Kemmerer .....162.525            Lander .....162.475            Newcastle .....162.475            Pinedale .....162.500            Rawlins .....162.425            Rock Springs .....162.550            Sheridan .....162.475            Thermopolis .....162.500            Worland .....162.525</p>
---	---

The National Weather Service requests your assistance in reporting any outages of NOAA Weather Broadcast Stations.

Please use our Toll Free Number (888) 697-7263 or send an Email to [nwroutage@noaa.gov](mailto:nwroutage@noaa.gov) to report the outage.

Clinton.....	162.500	Norfolk .....	162.550
Columbia.....	162.400	North Platte.....	162.550
Crocker.....	162.500	Omaha.....	162.400
Doniphan.....	162.450	Ord.....	162.525
El Dorado Springs.....	162.475	Oshkosh.....	162.525
Eldon.....	162.550	Scottsbluff.....	162.475
Fredericktown.....	162.500	Shubert.....	162.500
Gainesville.....	162.425	Sidney.....	162.500
Hannibal.....	162.475	Superior.....	162.525
Hermitage.....	162.450	Trenton.....	162.500
Jamestown.....	162.425	Valentine.....	162.450
Joplin.....	162.550	Yankton.....	162.500
Kansas City.....	162.550		
La Plata.....	162.525		
Lancaster.....	162.550		
Maryville.....	162.425		
Medill.....	162.450		
Neosho.....	162.450		
Piedmont.....	162.425		
Springfield.....	162.400		
St. Louis.....	162.550		
Summersville.....	162.475		
Trenton.....	162.500		
Wardell.....	162.525		
West Plains.....	162.525		

<b>MONTANA</b>			
Baker.....	162.550		
Belgian Hill.....	162.500		
Billings.....	162.550		
Bozeman.....	162.500		
Broadus.....	162.425		
Browning.....	162.525		
Butte.....	162.550		
Circle.....	162.550		
Dillon.....	162.475		
Ekalaka.....	162.475		
Forsyth.....	162.525		
Glasgow.....	162.400		
Glendive.....	162.475		
Glentana.....	162.525		
Great Falls.....	162.550		
Hardin.....	162.450		
Havre.....	162.400		
Helena.....	162.400		
Jordan.....	162.500		
Kalispell.....	162.550		
Lewistown.....	162.500		
Livingston.....	162.525		
Malta.....	162.475		
Miles City.....	162.400		
Missoula.....	162.400		
Plentywood.....	162.475		
Poplar.....	162.425		
Ryegate.....	162.450		
Scobey.....	162.450		
Wibaux.....	162.500		
Winnett.....	162.400		

<b>NEBRASKA</b>			
Albion.....	162.500		
Bassett.....	162.475		
Beatrice.....	162.450		
Cambridge.....	162.525		
Chadron.....	162.525		
Columbus.....	162.450		
Grand Island.....	162.400		
Holdrege.....	162.475		
Lexington.....	162.425		
Lincoln.....	162.475		
Merna.....	162.500		
Merriman.....	162.400		
Mullen.....	162.425		

<b>NEVADA</b>			
Battle Mtn.....	162.425		
Bullhead City.....	162.500		
Elko.....	162.550		
Ely.....	162.400		
Eureka.....	162.550		
Fernley.....	162.450		
Hawthorne.....	162.475		
Jackpot.....	162.500		
Las Vegas.....	162.550		
Owyhee.....	162.450		
Pahrump.....	162.400		
Reno.....	162.550		
Tonopah.....	162.400		
Winnemucca.....	162.400		

<b>NEW HAMPSHIRE</b>			
Clarksville.....	162.400		
Concord.....	162.400		
Deerfield.....	162.450		
Hanover.....	162.525		
Holderness.....	162.550		
Mt. Washington.....	162.500		
Pack Monadnock.....	162.525		
<b>NEW JERSEY</b>			
Atlantic City.....	162.400		
Hardyston.....	162.500		
Southard.....	162.450		

<b>NEW MEXICO</b>			
Albuquerque.....	162.400		
Artesia.....	162.425		
Carlsbad.....	162.475		
Des Moines.....	162.550		
Farmington.....	162.475		
Hobbs.....	162.400		
Las Cruces.....	162.400		
Portales.....	162.475		
Roswell.....	162.450		
Ruidoso.....	162.550		
Santa Fe.....	162.550		
Silver City.....	162.425		

<b>NEW YORK</b>			
Albany.....	162.550		
Binghamton.....	162.475		
Buffalo.....	162.550		
Call Hill.....	162.425		
Cattaraugus.....	162.425		
Cooperstown.....	162.450		
Elmira.....	162.400		
Frewsburg.....	162.525		
Gore Mtn.....	162.450		
Highland.....	162.475		
Ithaca.....	162.500		
Lyons.....	162.475		
Middleville.....	162.425		
Mt. Washington.....	162.450		
New York City.....	162.550		

Norwich.....	162.525	Toledo.....	162.500
Riverhead.....	162.475	Youngstown.....	162.500
Rochester.....	162.400		
Spencerport.....	162.525		
Stamford.....	162.400		
Syracuse.....	162.550		
Walton.....	162.425		
Watertown.....	162.475		
White Hill.....	162.525		

<b>NORTH CAROLINA</b>			
Asheville.....	162.400		
Buck Mountain.....	162.500		
Cape Hatteras.....	162.475		
Chapel Hill.....	162.550		
Charlotte.....	162.475		
Ellerbe.....	162.400		
Garner.....	162.450		
Henderson.....	162.500		
Linville.....	162.450		
Mamie.....	162.425		
Margarettsville.....	162.450		
Mooreville.....	162.525		
Mount Jefferson.....	162.500		
New Bern.....	162.400		
Robbinsville.....	162.525		
Rocky Mount.....	162.475		
Saint Pauls.....	162.475		
Warsaw.....	162.425		
Windsor.....	162.525		
Winnabow.....	162.550		
Winston-Salem.....	162.400		

<b>NORTH DAKOTA</b>			
Bismarck.....	162.475		
Cavalier.....	162.450		
Dickinson.....	162.400		
Fargo.....	162.475		
Fort Ransom.....	162.525		
Grand Forks.....	162.475		
Jamestown.....	162.550		
Langdon.....	162.500		
Minot.....	162.400		
New Town.....	162.525		
Petersburg.....	162.400		
Rolla.....	162.475		
Scranton.....	162.525		
Sheyenne.....	162.525		
Steele.....	162.400		
Webster.....	162.425		
Williston.....	162.550		
Willow City.....	162.450		

<b>NORTHERN MARIANA ISLANDS</b>			
Saipan.....	162.550		

<b>OHIO</b>			
Akron.....	162.400		
Athens.....	162.425		
Bridgeport.....	162.525		
Carey.....	162.525		
Chillicothe.....	162.500		
Cleveland.....	162.550		
Columbus.....	162.550		
Dayton.....	162.475		
Grafton.....	162.500		
High Hill.....	162.475		
Lima.....	162.400		
Mansfield.....	162.450		
Marietta.....	162.400		
New Philadelphia.....	162.425		
Otway.....	162.525		
Sandusky.....	162.400		

Toledo.....	162.500
Youngstown.....	162.500

<b>OKLAHOMA</b>	
Altus.....	162.425
Antlers.....	162.400
Ardmore.....	162.525
Atoka.....	162.500
Bartlesville.....	162.425
Broken Bow.....	162.450
Chickasha.....	162.450
Clinton.....	162.525
Enid.....	162.475
Grove.....	162.525
Guymon.....	162.500
Lawton.....	162.550
McAlester.....	162.475
Oklahoma City.....	162.400
Oktaha.....	162.525
Ponca City.....	162.450
Stillwater.....	162.500
Tulsa.....	162.550
Wewoka.....	162.550
Woodward.....	162.500

<b>OREGON</b>	
Bend/Redmond.....	162.500
Brookings.....	162.550
Burns Butte.....	162.475
Cape Blanco.....	162.425
Carney Butte.....	162.475
Coos Bay.....	162.400
Eugene.....	162.400
Florence.....	162.500
Fossil.....	162.550
Heppner.....	162.425
John Day.....	162.500
Klamath Falls.....	162.550
Medford.....	162.400
Mt Hebo.....	162.525
Mt. Ashland.....	162.475
Neahkahnie.....	162.425
Newport.....	162.550
Portland.....	162.550
Reedsport.....	162.525
Roseburg.....	162.550
Salem.....	162.475
Spout Springs.....	162.400
The Dalles.....	162.400
Tillamook.....	162.475

<b>PENNSYLVANIA</b>	
Allentown.....	162.400
Altoona.....	162.425
Clearfield.....	162.550
Coudersport.....	162.500
Erie.....	162.400
Harrisburg.....	162.550
Hibernia Park.....	162.425
Honesdale.....	162.450
Huntingdon.....	162.525
Johnstown.....	162.400
Meadville.....	162.475
Parker.....	162.425
Philadelphia.....	162.475
Pittsburgh.....	162.550
Reynoldsville.....	162.500
State College.....	162.475
Towanda.....	162.525
Warren.....	162.450
Wellsboro.....	162.475
Wilkes-Barre.....	162.550
Williamsport.....	162.400

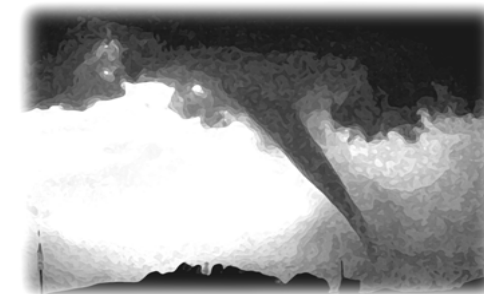
natural disasters and nuclear attack. This concept has been expanded to include warnings for all hazardous conditions that pose a threat to life and safety, both at a local and national level. As a result, NOAA Weather Radio is being better integrated with other National Weather Service systems to provide state and local emergency managers and other warning providers better access to local weather forecast offices, allowing hazard warnings of all types to be broadcast on NOAA Weather Radio within seconds

NOAA Weather Radio currently broadcasts from 1031 stations in fifty states, Puerto Rico, the U.S. Virgin Islands, American Samoa, Guam, and Saipan on seven frequencies in the VHF band, ranging from 162.400 to 162.550 megahertz (MHz). These frequencies are outside the normal AM or FM broadcast bands.

Special radios that receive only NOAA Weather Radio, both with and without special alerting features, are available from numerous manufacturers. In addition, other manufacturers are including NWR capability in a variety of receivers. NOAA Weather Radio capability is currently available on automobile, aircraft, marine, citizens band, and standard AM/FM radios as well as communications receivers, transceivers, scanners, and cable TV.

By nature and design, NOAA Weather Radio coverage is limited to an area within 40 miles of the transmitter. The quality of reception is dictated by transmitter distance, local terrain, and the quality and location of the receiver. In general, those using a high quality receiver on flat terrain or at sea can expect reliable reception beyond 40 miles. Those with standard receivers, surrounded by large buildings in cities and those in mountain valleys may experience little or no reception at considerably less than 40 miles. If possible, a receiver should be tested in the location where it will be used prior to purchase.

NOAA Weather Radio is directly available to a large portion of the U.S. population. The National Weather Service is currently engaged in a program to increase coverage to at least 95 percent of the population.



If you have a question regarding the technical aspects of NOAA Weather Radio such as transmitter location, reception, and characteristics or if you are interested in becoming a partner with the National Weather Service to identify or provide local funding and/or facilities for the installation of a NOAA Weather Radio transmitter, please contact your local National Weather Service Office or send a letter to:

National Weather Service  
 Attn: Dissemination Systems Branch, W/OPS17  
 1325 East-West Highway  
 Silver Spring, MD 20910

The following is a listing of operational stations by state. For specific coverage information for your local area please visit our website at:

<http://www.weather.gov/nwr/>

**ALABAMA**

Aniston.....	162.475
Arab.....	162.525
Auburn.....	162.525
Birmingham.....	162.550
Brewton.....	162.475
Columbus.....	162.400
Cullman.....	162.450
Demopolis.....	162.475
Dozier.....	162.550
Florence.....	162.475
Greenville.....	162.425
Henagar.....	162.500
Huntsville.....	162.400
Jackson.....	162.500
Louisville.....	162.475
Mobile.....	162.550
Montgomery.....	162.400
Oneonta.....	162.425
Selma.....	162.450
Tuscaloosa.....	162.400
Winfield.....	162.525

**ALASKA**

Althorp Peak.....	162.425
Anchorage.....	162.550
Bede Mountain.....	162.450
Bethel.....	162.550
Cape Fanshaw.....	162.425
Cape Gull.....	162.500
Cape Hinchinbrook.....	162.525
Cold Bay.....	162.425
Cordova.....	162.400
Craig.....	162.475
Dillingham.....	162.500
Duffield Peninsula.....	162.525
Duke Island.....	162.450
East Point.....	162.500
Fairbanks.....	162.550
Glennallen.....	162.550
Gravina Island.....	162.525
Haines.....	162.400
Homer.....	162.400
Juneau.....	162.550
Ketchikan.....	162.550
Kodiak.....	162.550
Kotzebue.....	162.550
Manleyville.....	162.500
Marmot Island.....	162.500
Middle Cape.....	162.525
Mt. McArthur.....	162.525
Mt. Robert Barron.....	162.450
Nenana.....	162.400
Ninilchik.....	162.550
Nome.....	162.550
Pillar Mtn.....	162.525
Point Pigot.....	162.450
Potato Point.....	162.425
Raspberry Island.....	162.425
Rugged Island.....	162.425
Saint Paul Island.....	162.525
Sand Point.....	162.550
Seward.....	162.550
Sitka.....	162.550
Sitkinak Dome.....	162.450

Soldotna.....	162.475
Sukkwun Island.....	162.425
Tuklung Mtn.....	162.425
Unalaska.....	162.550
Utqiagvik.....	162.550
Valdez.....	162.550
Wasilla.....	162.400
Whittier.....	162.475
Wrangell.....	162.400
Yakutat.....	162.400
Zarembo Island.....	162.450

**AMERICAN SAMOA**

Mt. Ololete.....	162.550
Pago Pago.....	162.400

**ARIZONA**

Flagstaff.....	162.400
Globe.....	162.500
Grand Canyon.....	162.475
Greer.....	162.525
Kingman.....	162.425
Lake Havasu.....	162.400
Nogales.....	162.500
Payson Gila County N.....	162.425
Phoenix.....	162.550
Prescott.....	162.525
Safford.....	162.550
Tucson.....	162.400
Window Rock.....	162.550

**ARKANSAS**

Cherokee Village.....	162.475
El Dorado.....	162.525
Fayetteville.....	162.475
Fort Smith.....	162.550
Fountain Hill.....	162.475
Gurdon.....	162.475
Harrison.....	162.525
High Peak.....	162.425
Jonesboro.....	162.550
Little Rock.....	162.550
Marvell.....	162.525
Mena.....	162.400
Morrilton.....	162.475
Mountain View.....	162.450
Russell.....	162.400
Russellville.....	162.525
Springdale.....	162.400
Star City.....	162.400
Yellville.....	162.500

**CALIFORNIA**

Avalon.....	162.525
Bakersfield.....	162.550
Big Rock Ridge.....	162.500
Bishop.....	162.425
Coachella.....	162.400
Coachella / Spanish.....	162.525
Contra Costa County.....	162.425
Conway Summit.....	162.525
El Paso Mtns.....	162.425
Nome.....	162.400
Eureka.....	162.400
Fresno.....	162.400
Grass Valley.....	162.400
Horse Mtn.....	162.450
Los Angeles.....	162.550
Malibu Marine.....	162.425
Monterey.....	162.550
Monterey Marine.....	162.450
Point Arena.....	162.550
Redding.....	162.550
Sacramento.....	162.550

San Diego.....	162.400
San Diego Marine.....	162.425
San Francisco.....	162.400
San Luis Obispo.....	162.550
San Simeon.....	162.525
Sandberg.....	162.425
Santa Ana.....	162.450
Santa Barbara.....	162.400
Santa Barbara Marine.....	162.475
Sonoma County.....	162.475
Susanville.....	162.500
Ukiah.....	162.525
Victorville.....	162.500
Yosemite.....	162.450
Yuma.....	162.550

**COLORADO**

Alamosa.....	162.475
Anton.....	162.425
Bethune.....	162.525
Bovero.....	162.450
Canon City.....	162.500
Colorado Springs.....	162.475
Deer Trail.....	162.500
Denver.....	162.550
Dillon.....	162.400
Durango.....	162.425
Eagle.....	162.450
Fort Collins/Ault.....	162.450
Fort Morgan.....	162.525
Fowler.....	162.425
Franktown.....	162.450
Glenwood Springs.....	162.500
Grand Junction.....	162.550
Greeley.....	162.400
La Junta.....	162.500
Lamar.....	162.525
Mead/Longmont.....	162.475
Montrose.....	162.450
North Cottonwood.....	162.500
Pueblo.....	162.400
Springfield.....	162.400
Steamboat Springs.....	162.525
Sterling.....	162.400
Walsenburg.....	162.450
Wray.....	162.475

**CONNECTICUT**

Cornwall.....	162.500
Hartford.....	162.475
Meriden.....	162.400
New London.....	162.550

**DELAWARE**

Lewes.....	162.550
Salisbury.....	162.475

**DISTRICT OF COLUMBIA**

Washington DC.....	162.450
--------------------	---------

**FLORIDA**

Belle Glade.....	162.400
Daytona Beach.....	162.400
East Point.....	162.500
Fort Myers.....	162.475
Fort Pierce.....	162.425
Gainesville.....	162.475
Hialeah Spanish.....	162.500
Inverness.....	162.400
Jacksonville.....	162.550
Key West.....	162.400
Lake City.....	162.400
Largo.....	162.450

Melbourne.....	162.550
Miami.....	162.550
Morrison.....	162.550
Naples.....	162.525
Ocala.....	162.525
Orlando.....	162.475
Palatka.....	162.425
Panama City.....	162.550
Pensacola.....	162.400
Princeton.....	162.425
Salem.....	162.425
Sebring.....	162.500
Sneads.....	162.425
Sumterville.....	162.500
Tallahassee.....	162.400
Tampa Bay.....	162.550
Tea Table Key.....	162.450
Venice.....	162.400
West Palm Beach.....	162.475
Westville.....	162.450

**GEORGIA**

Americus.....	162.425
Ashburn.....	162.450
Athens.....	162.400
Atlanta.....	162.550
Augusta.....	162.550
Baxley.....	162.525
Blakely.....	162.525
Blue Ridge.....	162.475
Brasstown Bald.....	162.500
Brunswick.....	162.425
Buchanan.....	162.425
Chatsworth.....	162.400
Clayton.....	162.450
Cleveland.....	162.525
Eastman.....	162.400
Eatonton.....	162.525
Jesup.....	162.450
La Grange.....	162.450
Macon.....	162.475
Metter.....	162.425
Pelham.....	162.550
Sandersville.....	162.450
Summerville.....	162.450
Thomaston.....	162.500
Toccoa.....	162.425
Valdosta.....	162.500
Washington.....	162.500
Waycross.....	162.475
Waynesboro.....	162.425

**GUAM**

Guam.....	162.400
-----------	---------

**HAWAII**

Hawaii Kai.....	162.450
Kauai.....	162.400
Kulani Cone.....	162.550
Maui.....	162.400
North Kohala.....	162.500
Oahu.....	162.550
South Point.....	162.550

**IDAHO**

Boise.....	162.550
Bonnors Ferry.....	162.500
Burley.....	162.475
Driggs.....	162.450
Grangeville.....	162.450
Lewiston.....	162.550
McCall.....	162.475
Orofino.....	162.500

Payette.....	162.400
Pocatello.....	162.550
Salmon.....	162.500
Sedgwick Peak.....	162.425
Sun Valley.....	162.450
Twin Falls.....	162.400

**ILLINOIS**

Bloomington.....	162.525
Champaign.....	162.550
Chester.....	162.450
Chicago.....	162.550
Crescent City.....	162.500
Crystal Lake.....	162.500
DeKalb.....	162.550
Dixon.....	162.525
Freeport.....	162.450
Galesburg.....	162.400
Hillsboro.....	162.425
Jacksonville.....	162.525
Jerseyville.....	162.450
Kankakee.....	162.525
Lockport.....	162.425
Macomb.....	162.500
Marion.....	162.425
McLeansboro.....	162.400
Newton.....	162.450
Odell.....	162.450
Paris.....	162.525
Peoria.....	162.475
Plano.....	162.400
Princeton.....	162.425
Quad Cities.....	162.550
Rockford.....	162.475
Salem.....	162.475
Shelbyville.....	162.500
Springfield.....	162.400

**INDIANA**

Angola.....	162.425
Bloomington.....	162.450
Edwardsport.....	162.425
Evansville.....	162.550
Fort Wayne.....	162.550
Georgia.....	162.500
Hebron.....	162.450
Indianapolis.....	162.550
Marion.....	162.450
Michigan City.....	162.500
Monticello/Lafayette.....	162.475
Muncie.....	162.425
New Albany.....	162.475
Newport.....	162.425
North Webster.....	162.500
Putnamville.....	162.400
Richmond.....	162.500
Seymour.....	162.525
South Bend.....	162.400

**IOWA**

Burlington.....	162.525
Carroll.....	162.425
Cedar Rapids.....	162.475
Decorah.....	162.525
Delaware.....	162.450
Denison.....	162.550
Des Moines.....	162.550
Essex.....	162.550
Fairfield.....	162.400
Forest City.....	162.500
Fort Dodge.....	162.400
Hancock/Pottawattam.....	162.525
Iowa Falls.....	162.525

Lake Rathbun.....	162.425
Lenox.....	162.450
Maquoketa.....	162.425
Marshalltown.....	162.500
Milford.....	162.550
Montezuma.....	162.450
Ottumwa.....	162.500
Ringsted.....	162.475
Sanborn.....	162.525
Sioux City.....	162.475
St. Ansgar.....	162.450
Storm Lake.....	162.450
Van Wert.....	162.475
Waterloo.....	162.550

**KANSAS**

Abilene.....	162.525
Beaumont.....	162.500
Belvidere.....	162.525
Blue Rapids.....	162.425
Chanute.....	162.400
Concordia.....	162.550
Dighton.....	162.525
Dodge City.....	162.475
Ellsworth.....	162.400
Gem.....	162.400
Great Bend.....	162.500
Halls Summit.....	162.425
Hays.....	162.450
Kirwin.....	162.500
Lenora.....	162.425
Meade.....	162.425
Parker.....	162.525
Saint Joseph.....	162.400
Sharon.....	162.400
Topeka.....	162.475
Tribune.....	162.550
Ulysses.....	162.450
Wichita.....	162.550

**KENTUCKY**

Ashland.....	162.550
Beattyville.....	162.500
Bowling Green.....	162.400
Burkesville.....	162.475
Campbellsville.....	162.525
Covington.....	162.550
East Madison County.....	162.525
Edmonton.....	162.450
Ekron.....	162.450
Elizabethtown.....	162.550
Frankfort.....	162.500
Frenchburg.....	162.475
Harlan.....	162.450
Hazard.....	162.475
Hopkinsville.....	162.450
Horse Cave.....	162.500
Irvine.....	162.475
Jackson.....	162.425
Lexington.....	162.400
London.....	162.475
Madison County.....	162.525
Madisonville.....	162.525
Manchester.....	162.400
Mayfield.....	162.475
Maysville.....	162.425
McKee.....	162.450
Moberly.....	162.525
Monticello.....	162.425
Morehead.....	162.400
Mount Vernon.....	162.425
Owenton.....	162.450
Paintsville.....	162.525

Phelps.....	162.500
Pikeville.....	162.400
Pineville.....	162.525
Somerset.....	162.550
Stanton.....	162.550
West Liberty.....	162.450
West Madison County.....	162.525
Whitesville.....	162.475
Williamsburg.....	162.500

**LOUISIANA**

Alexandria.....	162.475
Baton Rouge.....	162.400
Bogalusa.....	162.525